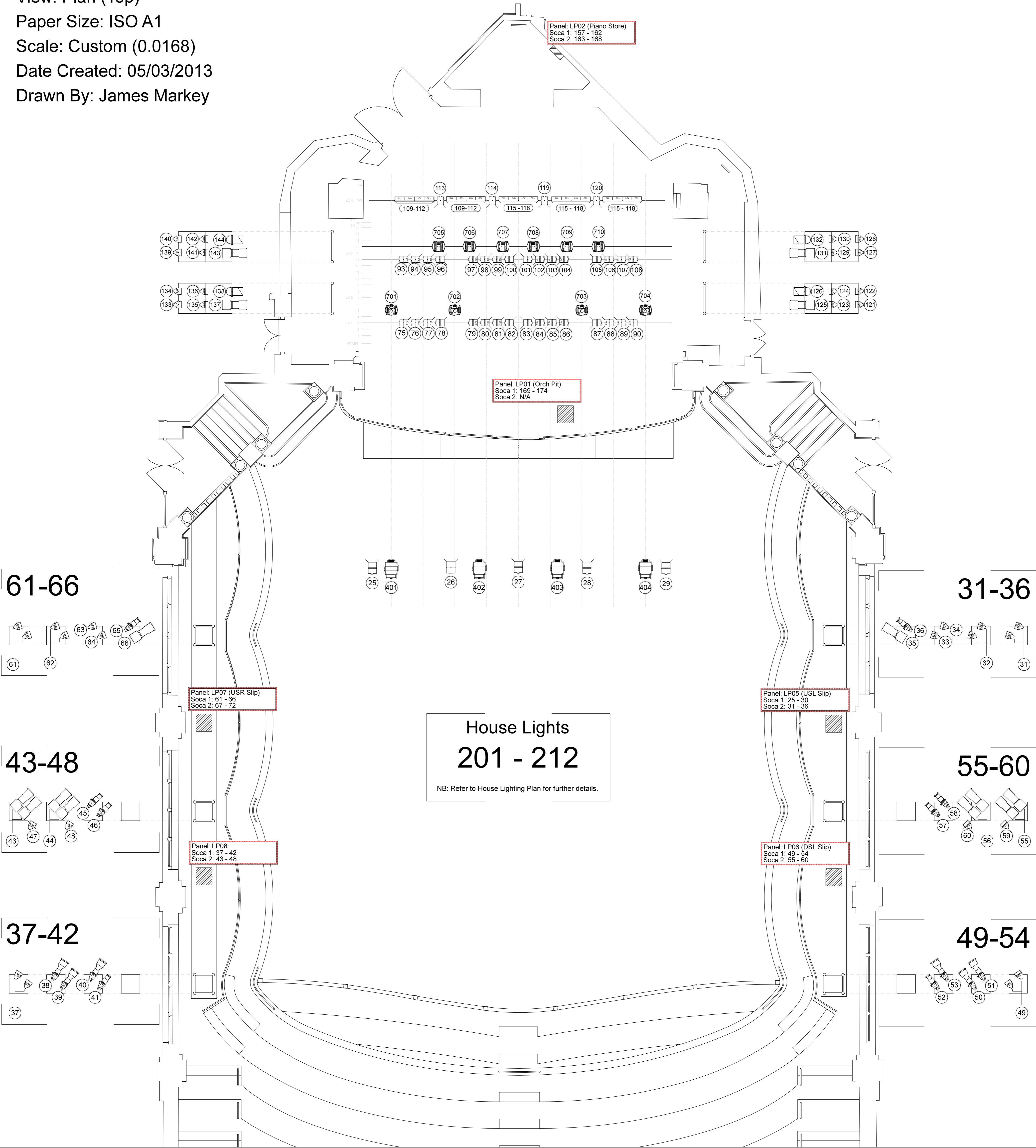


Royal Hall Lighting Plan



Version: AC-1.001
View: Plan (Top)
Paper Size: ISO A1
Scale: Custom (0.0168)
Date Created: 05/03/2013
Drawn By: James Markey



Fixture Key

- ETC Source 4 10 Degree
- ETC Source 4 19 Degree
- ETC Source 4 26 Degree
- CCT Silhouette 30
- ADB 1K Fresnel
- ADB 2K Fresnel
- ETC Source 4 Par (VNS)
- ETC Source 4 Par (MFL)
- Long Nose Par 64 (CP60)
- Long Nose Par 64 (CP62)
- 4 Cell Flood Bar
- ETC S4 Revolution
- Martin Mac 300
- Martin Mac 250 wash

Lighting Notes

Extra Equipment

The lantern stock in the generic rig exceeds that of the standard Royal Hall specification. Incoming productions are welcome to use this extra equipment, rigged in its current location at no additional cost.

Please note Harrogate International Centre takes no responsibility for the failure of equipment or subsequent consequences arising from use of equipment in excess of the specification. This includes but is not limited to 4x Martin Mac 300's and 2x Martin Mac 250 Wash's.

Any equipment not shown on this plan with the exception of 1x Le Maitre DF50 hazer, 1x Jem AF1 fan & 4x Martin Mac 250 Entour's is a chargeable items.

Gel

HIC Stocks only Lee Filters and only a limited stock. Should alternative colours be required advance notice for cutting or sourcing of required colour.

The Royal Hall uses standard colours in the rig. These are shown on the fixtures in the plan but to summarise:

Overhead Wash	Orchestra Side Light	Cyclorama Wash
L579 (Dark Blue)	L519 (Pink)	L519 (Dark Blue)
L558 (Primary Red)	L561 (Dark Blue)	L558 (Primary Red)
L558 (Deep Orange)		L534 (Deep Amber)
Open White		L539 (Primary Green)

Deviation from these colours is a chargeable item for the gel and any extra hours outside of the inclusive technical staffing allowance.

Alterations to the Standard Rig.

The rig in the specification is as shown on this plan. Alteration to the standard rig must be done within the contracted tenancy of the production in question. This also includes restoring the rig back to standard at the end of the event. Should this exceed the hour provided in the inclusive technical staffing allowance there will be a charge.